

Square Pipe Fuse Links With Knife Contacts



Low-Voltage Fuses
Fuse links

► Applications

Protection against overload and short-circuit in electric lines (type gG), also available for protection of semiconductor parts and equipments against short-circuit (type aR) and protection of motors (type aM).

Rated voltage up to 1140V; Rated current up to 1250A; Working frequency 50Hz AC; Rated breaking capacity up to 120KA. Compliant with GB13539 and IEC269.

► Design Features

Variable cross-section fuse element made from pure copper or silver sealed in cartridge made from high-duty ceramic. Fuse tube filled with chemically treated high-purity quartz sand as arc-extinguishing medium. Dot-welding of fuse element ends to the terminals ensures reliable electric connection and forms insert knife type contacts. Indicator or striker may be attached to the fuse link to show cutout of fuse or to give various signals and to cut the circuit automatically.

► Basic Data

The models, dimensions, ratings are shown in Figures 4.1~4.13 and Tables 4 .

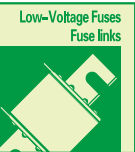


Table 4

Cat. No.	Models		Cross-reference		Rated voltage (V)	Rated current (A)	Dimensions/size (mm)			Weight (g)	
	MIRO		gG(Normal)	aR(Fast)			Sizes	Fig.	A		B
0401	NH00C	-	-	-	500/690	10-100	000	See Figure 4.1			138

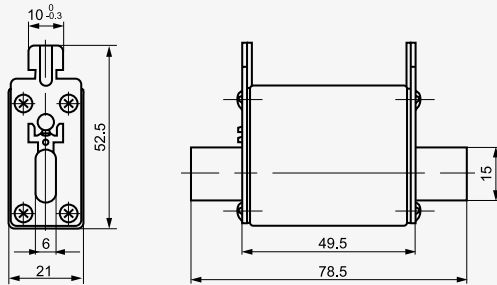


Figure 4.1

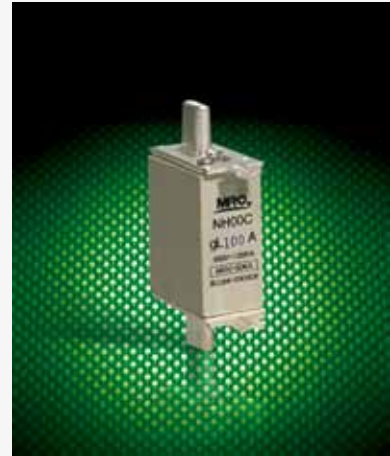


Table 4 (cont.)

Cat. No.	Models		Cross-reference		Rated voltage (V)	Rated current (A)	Dimensions/size (mm)					Weight (g)		
	MIRO		gG(Normal)	aR(Fast)			Sizes	Fig.	A	B	C		D	H
0402	NH00	RS31	-	3NE80...	500/690	10-160	00	4.2	78	50.5	15	30	60	201
0403	NH0	-	-	NGTC00	500/690	6-160	0	4.2	125	67	15	30	60	267

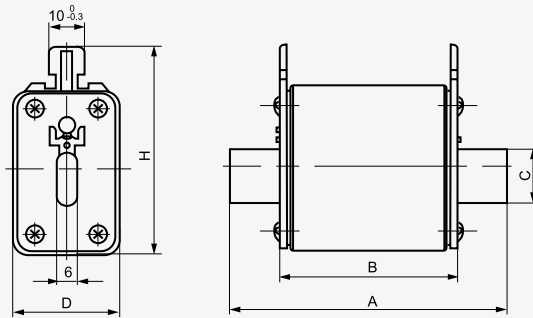


Figure 4.2



Table 4 (cont.)

Cat. No.	Models		Cross-reference		Rated voltage (V)	Rated current (A)	Dimensions/size (mm)					Weight (g)		
	MIRO		gG(Normal)	aR(Fast)			Sizes	Fig.	A	B	C		D	H
0404	NH1	RS32	-	-	500/690	32-250	1	4.3	135	68	20	46	58	447
0405	NH2	RS33	-	-	500/690	80-400	2	4.3	150	68	30	58	68	727
0406	NH3	RS34	-	-	500/690	160-630	3	4.3	150	68	36	70	82	975

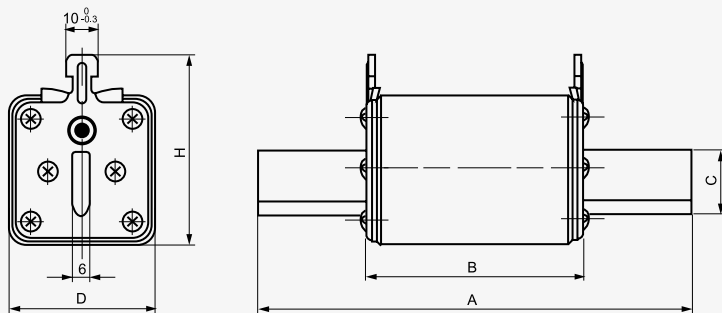


Figure 4.3



Table 4 (cont.)

Cat. No.	Models		Cross-reference		Rated voltage (V)	Rated current (A)	Dimensions/size (mm) Sizes Fig.	Weight (g)
	MIRO		gG(Normal)	aR(Fast)				
0407	NH1 (Small volume)	-	-	-	500/690	16~160	1 See Figure 4.4	312

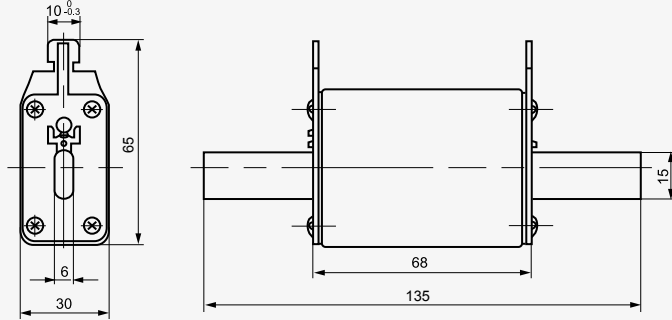


Figure 4.4



Low-Voltage Fuses Fuse links



Table 4 (cont.)

Cat. No.	Models		Cross-reference		Rated voltage (V)	Rated current (A)	Dimensions/size (mm)					Weight (g)		
	MIRO		gG(Normal)	aR(Fast)			Sizes Fig.	A	B	C	D		H	
0408	NH2 (Small volume)	-	-	-	500/690	35-250	2	4.5	150	67	20	46	67	458
0409	NH3 (Small volume)	-	-	-	500/690	200~400	3	4.5	150	67	30	58	81	727

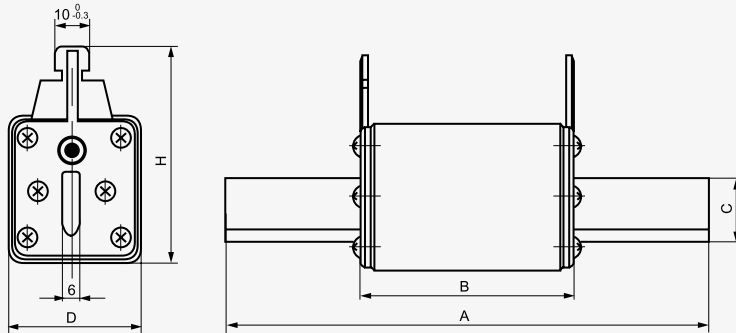


Figure 4.5



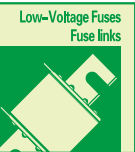


Table 4 (cont.)

Cat. No.	Models		Cross-reference		Rated voltage (V)	Rated current (A)	Dimensions/size (mm)					Weight (g)		
	MIRO gG(Normal)	RS30A aR(Fast)	gG(Normal)	aR(Fast)			Sizes Fig.	A	B	C	D		H	
0410	RO30A	RS30A	NT00C	-	500/690	4~100	000	4.6	78	49	15	21	48	123
0411	RO30B	RS30B	NT00C	-	500/690	4~100	000	4.6	78	49	15	21	48	117
0412	RO30C	RS30C	3NA3	3NE18..	500/690	10~100	000	4.6	78	49	15	21	52.5	132
0413	RO31A	RS31A	PH00	-	500/690	10~160	00	4.6	78	49	15	30	53	178.5
0414	RO31B	RS31B	NT0	3NE41..	500/1140	6~160	0	4.6	125	68	15	29	61.5	278
0415	RO31C	RS31C	NT1	-	500/690	32~200	1	4.6	135	68	20	29	61.5	293.5

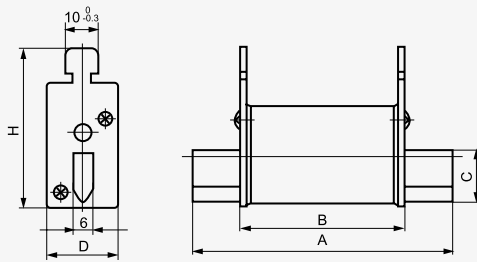


Figure 4.6



Table 4 (cont.)

Cat. No.	Models		Cross-reference		Rated voltage (V)	Rated current (A)	Dimensions/size (mm)					Weight (g)		
	MIRO gG(Normal)	NT00	RT16-00	NGTC00			Sizes Fig.	A	B	C	D		H	
0416	NT00		RT16-00	NGTC00	500/690	6~160	00	4.7	78	49	15	29	56	175
0417	NT0		RT16-0	-	500/690	6~160	0	4.7	125	68	15	29	56	252

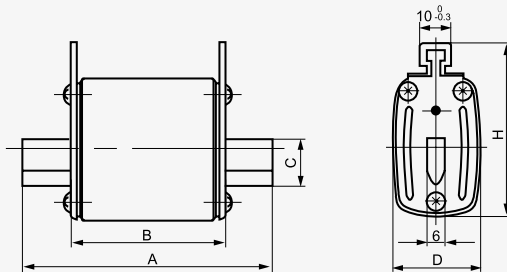


Figure 4.7



Table 4 (cont.)

Cat. No.	Models		Cross-reference		Rated voltage (V)	Rated current (A)	Dimensions/size (mm) Sizes Fig.	A	B	C	D	H	Weight (g)	
	MIRO gG(Normal)	aR(Fast)	gG(Normal)	aR(Fast)										
0418	RO32	RS32	NT1 RT16-1 3NA1 RT20-1	3NE12.. NGTC1	500/690	32-250	1	4.8	135	68	20	48	60	455
0419	RO32A	RS32A	-	-	1140	200	1	4.8	172	110	19.5	44	58	570
0420	RO32B	RS32B	NT1 RT16-1	-	500	250	2	4.8	135	68	20	40	68	393
0421	RO33	RS33	NT2 RT16-2 3NA1 RT20-2	3NE13.. NGTC2	500/690	80-400	2	4.8	150	68	25	58	70	650
0422	RO33B	RS33B	RT16-2	-	500	400	2	4.8	150	68	25	52	71	580
0423	RO34	RS34	NT3 RT16-3 NH3 RT20-3	3NE14.. NGTC3	500/690	160-630	3	4.8	150	68	32	68	80	880
0424	RO35	RS35	-	-	500	6-160	4.8	135	68	20	30	53	249	
0425	RO36	RS36	EAP0	-	500	32-200	1	4.8	135	68	20	40	59	356
0426	RO39A	RS39A	NT4a	-	380/500	500-1250 4a	4.8	200	90	50	97	113	2140	

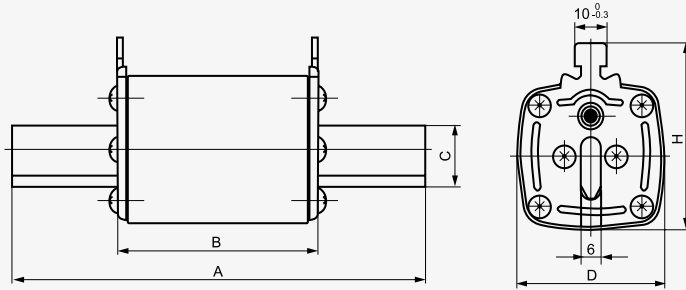


Figure 4.8



Low-Voltage Fuses Fuse links



Table 4 (cont.)

Cat. No.	Models		Cross-reference		Rated voltage (V)	Rated current (A)	Dimensions/size (mm) Sizes Fig.	A	B	C	D	G	E	F	H	Weight (g)	
	MIRO gG(Normal)	aR(Fast)	gG(Normal)	aR(Fast)													
0427	RO34K	RS34K	-	3NC8	500/690	150-630	4.9	140	68	32	68	6	108	10.5	85	810	
0428	RO38	RS38	-	3NE3626	500/1000	200-630	4.9	160	86	32	70	6	126	11	82	1050	
0429	RO39	RS39	NT4 RT17	-	500	500-1250	4	4.9	200	90	50	97	8	150	16.5	113	2470
0430	RO39B	RS39B	NT4B RT17	-	500	500-1000	4	4.9	200	79	50	88	8	150	17	115	2100

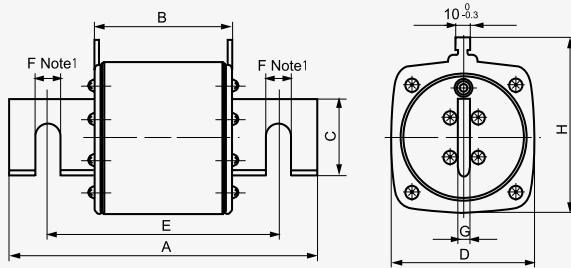


Figure 4.9

Note: The joint holes of two-horizontal type is allowed to be changed to one horizontal one straight type or two straight type.



Table 4 (cont.)

Cat. No.	Models		Cross-reference		Rated voltage (V)	Rated current (A)	Dimensions/size (mm) Sizes Fig.	Weight (g)
	MIRO		gG(Normal)	aR(Fast)				
0431	RO34A	RS34A	8SY5023	-	1140	450	- See Figure 4.10	1066

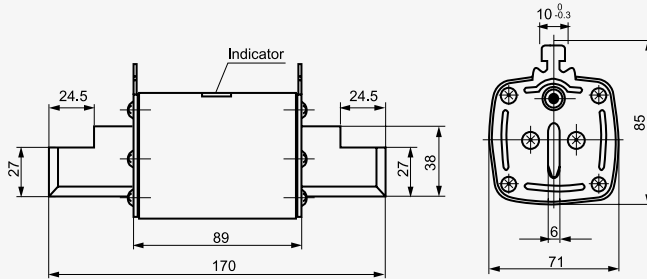


Figure 4.10



Table 4 (cont.)

Cat. No.	Models		Cross-reference		Rated voltage (V)	Rated current (A)	Dimensions/size (mm) Sizes Fig.	Weight (g)
	MIRO		gG(Normal)	aR(Fast)				
0432	RO31Z	RS31Z	RT16A-00	-	500/690	35~125	00 4.11 78 49 15 29 15 22.5 - 59.5 8	183
0433	RO32Z	RS32Z	RT16A-1	-	500/690	200~250	1 4.11 135 68 20 48 25 14.5 16 60 12	390
0434	RO33Z	RS33Z	RT16A-2	-	500/690	315~400	2 4.11 150 68 25 58 30 14.5 19 70 12	683
0435	RO34Z	RS34Z	RT16A-3	-	500/690	500~630	3 4.11 150 68 32 67 30 14.5 19 82 12	880
0436	NTA-1	-	-	-	500/690	200~250	1 4.11 135 68 20 48 8 26.5 - 60 8	380
0437	NTA-2	-	-	-	500/690	315~400	2 4.11 150 68 25 58 8 32 - 70 8	673
0438	NTA-3	-	-	-	500/690	500~630	3 4.11 150 68 32 67 8 40 - 82 8	870
0439	RO36Z	RS36Z	-	-	500/690	125~160	4.11 135 68 20 40 25 20 11.5 61 12	369

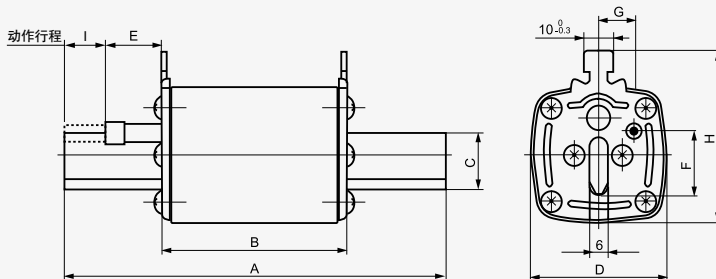


Figure 4.11



Table 4 (cont.)

Cat. No.	Models		Cross-reference		Rated voltage (V)	Rated current (A)	Dimensions/size (mm) Sizes Fig.	A	B	C	D	E	F	G	H	Weight (g)	
	MIRO		gG(Normal)	aR(Fast)													gG(Normal)
0440	RO32BZ	RS32BZ	-	HLS1	500	125-250	1	4.12	135	68	20	50.5	9	24.5	26	68	380
0441	RO33BZ	RS33BZ	-	HLS2	500	250-400	2	4.12	150	68	25	66.5	9	29	35	71	675

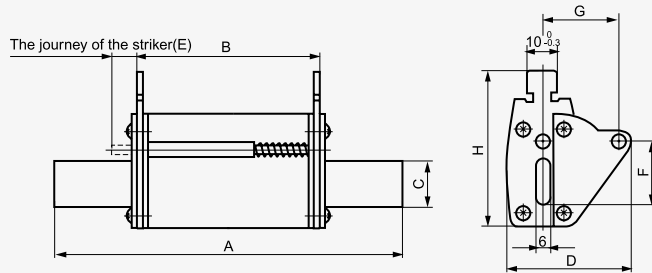


Figure 4.12



Low-Voltage Fuses Fuse links



Table 4 (cont.)

Cat. No.	Models		Cross-reference		Rated voltage (V)	Rated current (A)	Dimensions/size (mm) Sizes Fig.	A	B	C	D	H	Weight (g)	
	MIRO		gG(Normal)	aR(Fast)										
0442	RTO-50	-	-	-	380	10-50	-	4.13	103	66	10.3	25	52	189.5
0443	RTO-100	-	-	-	380	20-100	-	4.13	125	67	18	40	52	313
0444	RTO-200	-	-	-	380	50-200	-	4.13	135	67	23	46	58	404.5
0445	RTO-400	-	-	-	380	160-400	-	4.13	145	67	30	55	66	601
0446	RTO-600	-	-	-	380	250-600	-	4.13	165	67	36	66	77	855
0447	RTO-1000	-	-	-	380	500-1000	-	4.13	280	90	50	85	100	2050

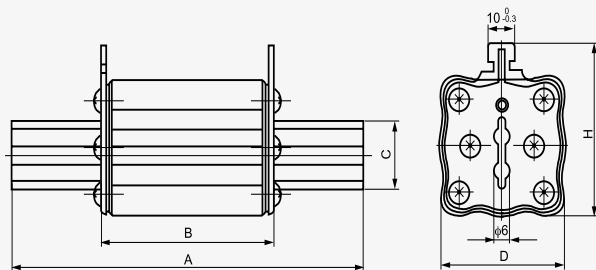
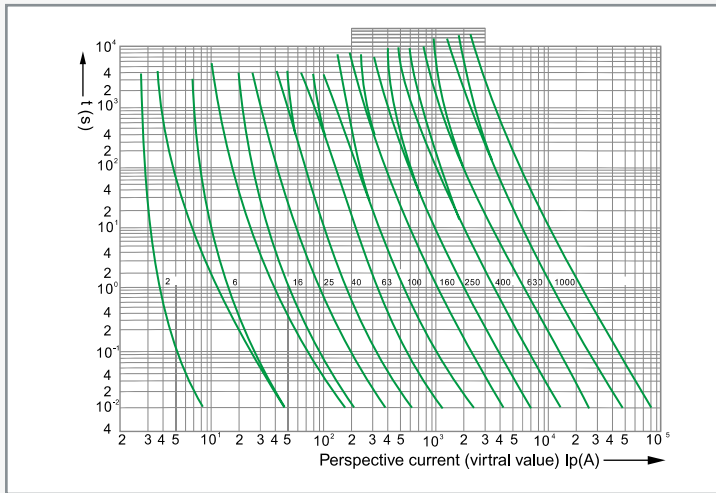
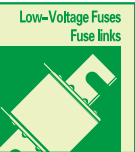


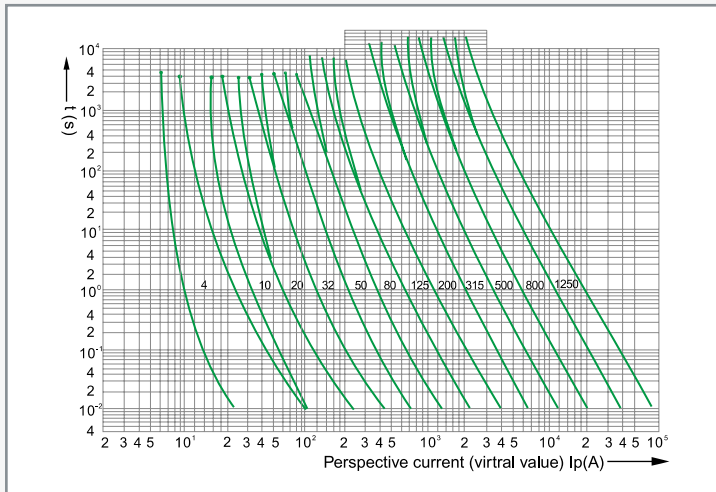
Figure 4.13



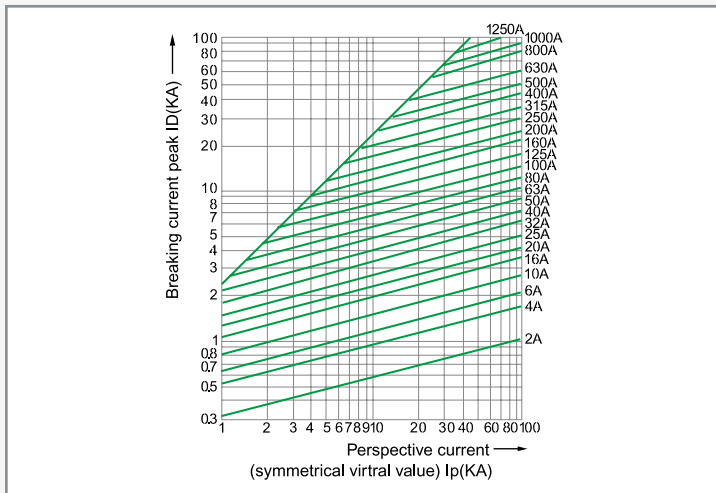
▶ **Characteristics Curve**



Time-current range of "gG" fuse links



Time-current range of "gG" fuse links



Breaking current characteristics curve of "gG" fuse links